

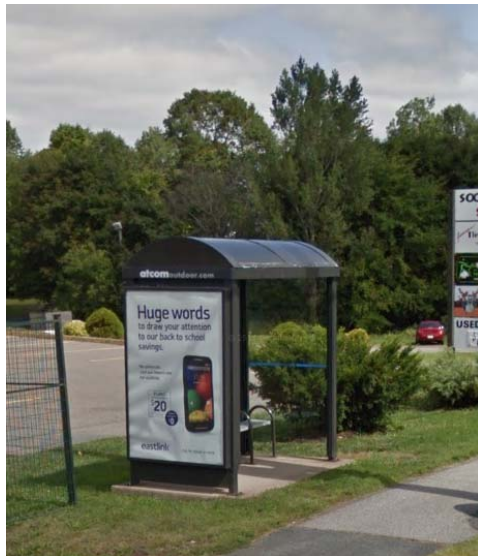
## Transit Shelter Advertising

Incorporated in 1996, **Atcom Outdoor Advertising** has been providing Transit Shelter Advertising in the Annapolis Valley for almost 20 years. We have Transit Shelters located in the major population centers from Windsor to Digby along the busy Highway 1, providing maximum exposure for your ads.

Our Transit Shelters are backlit to ensure that your ads are working for you 24 hours a day, 7 days a week.

We are a family owned and operated business with extensive experience in working with National, Regional and Local advertisers and Agencies.

Contact us to see how out of home advertising can work for you. We look forward to assisting you meet and exceed your advertising goals.



Atcom Outdoor is proud to be a member of



**atcom**  
O u t d o o r

ATCOM OUTDOOR ADVERTISING  
PO Box 351  
Canning, BOP 1H0  
902-679-8000  
[www.atcomoutdoor.com](http://www.atcomoutdoor.com)  
[info@atcomoutdoor.com](mailto:info@atcomoutdoor.com)

A large photograph of a transit shelter on a street. The shelter is a modern, dark-colored structure with a curved roof and a large backlit advertisement panel. The advertisement shows a close-up of a burger. In the background, there is a parking lot with several cars and a building with a red roof. The sky is blue with some clouds.

## Important Market Facts

- The corridor from Digby in the East, through to Windsor in the West is the second largest market in Nova Scotia.
- The area boasts above average demographics in income and education and a diverse economy.
- Market population of 138,100 residents
- Our shelters are all located the main travel artery; Route / Hwy #1
- The Annapolis Valley is home to Acadia University, two Nova Scotia Community College (NSCC) campuses, Michelin Tire, CFB Greenwood & CFB Aldershot, and Grand Pre UNESCO World Heritage site.
- Shelters feature brilliantly backlit signage panels that feature your ad 24 hours a day, seven days a week.
- We offer complete turn-key services installing, rotating and maintaining your ads in our shelters.
- We are pleased to advise you on professional design and printing services for superior ads that will best promote your product or service.

